



CHANCELLOR
STATE COLLEGE

The best we can be

QCE at CSC Year 10 into 11 Senior Secondary Information

CARE COURTESY COOPERATION CHALLENGE COMMITMENT

Welcome to tomorrow...



CHANCELLOR
STATE COLLEGE

The best we can be



CARE COURTESY COOPERATION CHALLENGE COMMITMENT

Our Team, Your Team!

Administration:

Brad Roberts (Executive Principal)
Greg Prestwidge (Secondary Campus Principal)
Dearnne Beatson (Deputy Principal – Junior Secondary Yr. 7 & 8)
Darren Gibson (Deputy Principal – Junior Secondary Yr. 9)
Crystal Caton (Deputy Principal – Senior Secondary Yr.10)
Philippa Walker (Deputy Principal – Senior Secondary Yr. 11 & 12)
Sue Ralph (Deputy Principal - Inclusion)

Guidance Officers:

Fiona Annand
Tamsyn Niazov
Dominic Towler

Heads of Department:

Gené Riley (HOD Senior School – QCAA & Yr 11&12 HoD)
Sandra Goldsworthy (HOD Senior School – VET & Yr 10 HoD)
Steve Redshaw (HOD - Student Services)
Tania Waterman (HOD - English)
Jessica Pommeranz (a/HOD - Mathematics)
Bill Liddle (HOD - Science)
Ashley Egan (a/HOD – Humanities)
Rebecca Stephenson (HOD – Creative Industries)
Anthony Walker (HOD - Health & Performance)
Wayne Hoger (HOD Senior School –Technology and Hospitality)
Dale Dittman (HOD – Enterprise and Innovation)
John Holden & Audrey Hearn (HOD – Global Schooling)

Year Level Co-ordinators:

Brady Cronk - Yr.12
Chris Wilkes - Yr.11
Kieran Braun - Yr.10



**CHANCELLOR
STATE COLLEGE**

The best we can be



Understanding Generation Z

- ✓ Generally defined as those aged 3 – 18.
- ✓ They are the most connected and shaped by their peers.
- ✓ Generation Z is the most materially endowed, technological saturated, formally educated generation our world has ever seen.
- ✓ Self-esteem as well as decisions are highly influenced by their core group of 3 – 8 friends.



KEY CHARACTERISTICS



Globally Aware:

Celebrities, fashions, foods, online entertainment, nothing escapes Generation Next.

Digital Natives:

Grows on iPads, Facebook, Smartphones, YouTube, etc.



Speed Demons:

Lives for speed and in a world of instant gratification.



Entertainment Addicts:

Seek out captivating campaigns and entertainment.



Collaborative Partners:

Want their voice to be heard and be involved in your brand through user-generated/ collaborative campaigns.

Micro Miners:

Every information has to be broken into bite-size, manageable pieces.

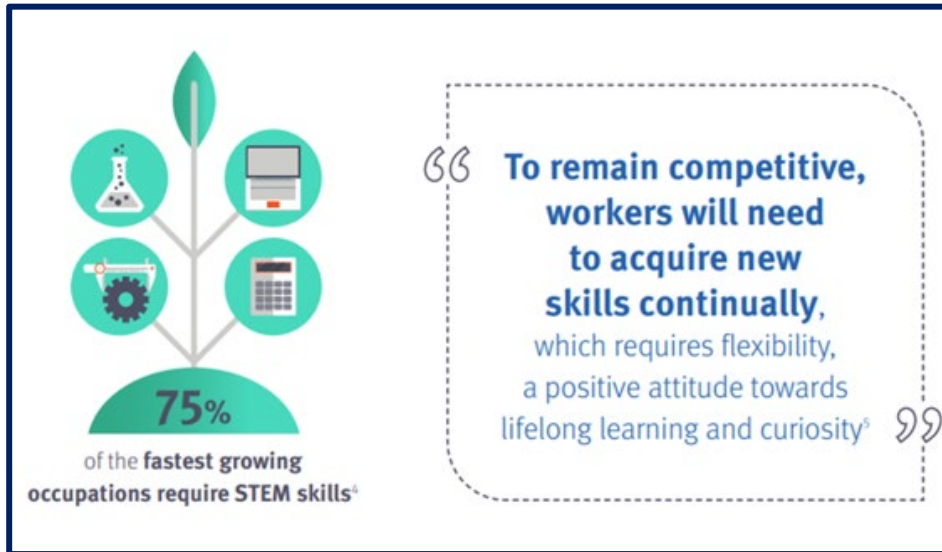


The changing world of work



CHANCELLOR
STATE COLLEGE

The best we can be



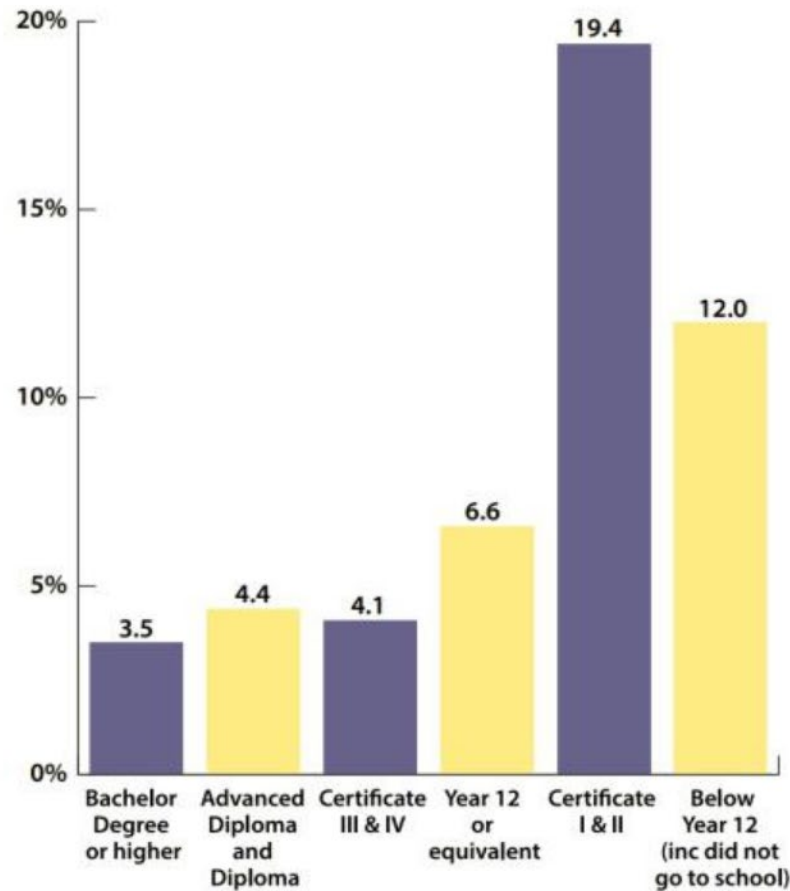
- Globalisation, emerging technology and shifts in demographics
- No longer preparing for a “job for life”
- A single qualification may not be sufficient
- Shift away from medium skilled jobs to higher skilled
- Demand for enterprise skills such as digital literacy, critical thinking and creativity

Sources: MCEECDYA, Australian Blueprint for Career Development; National Skills Commission, 2022



**CHANCELLOR
STATE COLLEGE**

The best we can be



Unemployment rates, persons aged 25–34, by highest level of education, Australia, 2022 (%)³

Source: *Your Career*, 2024

CARE COURTESY COOPERATION CHALLENGE COMMITMENT



Future Job Outlook QLD

While Queensland's job landscape is projected to grow across most industries in Queensland, by 2027-2028 more than 70% of additional jobs will be in 5 industries:

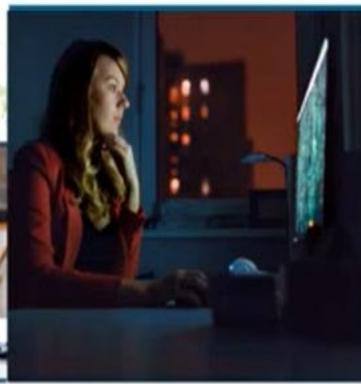
- Health care and social assistance
- Professional, scientific and technical services
- Education and training
- Public administration and safety
- Retail trade.



Physiotherapists



Health & Welfare Service
Managers



Management &
Organisation Analysts



Aged and Disabled Carers



ICT Managers

ANTICIPATING FUTURE SKILLS

Sunshine Coast Region

High population growth is projected to drive high employment growth in the Sunshine Coast region, with nine industries projected to experience growth above the state average by 2027-28. Health care and social assistance is set to be the largest-employing and fastest-growing industry. The top four industries are projected to employ over half of the region's total workforce.

By 2027-28, it is projected* that there will be:

216,818 people employed
in this region

+14,708 additional workers
since 2023-24



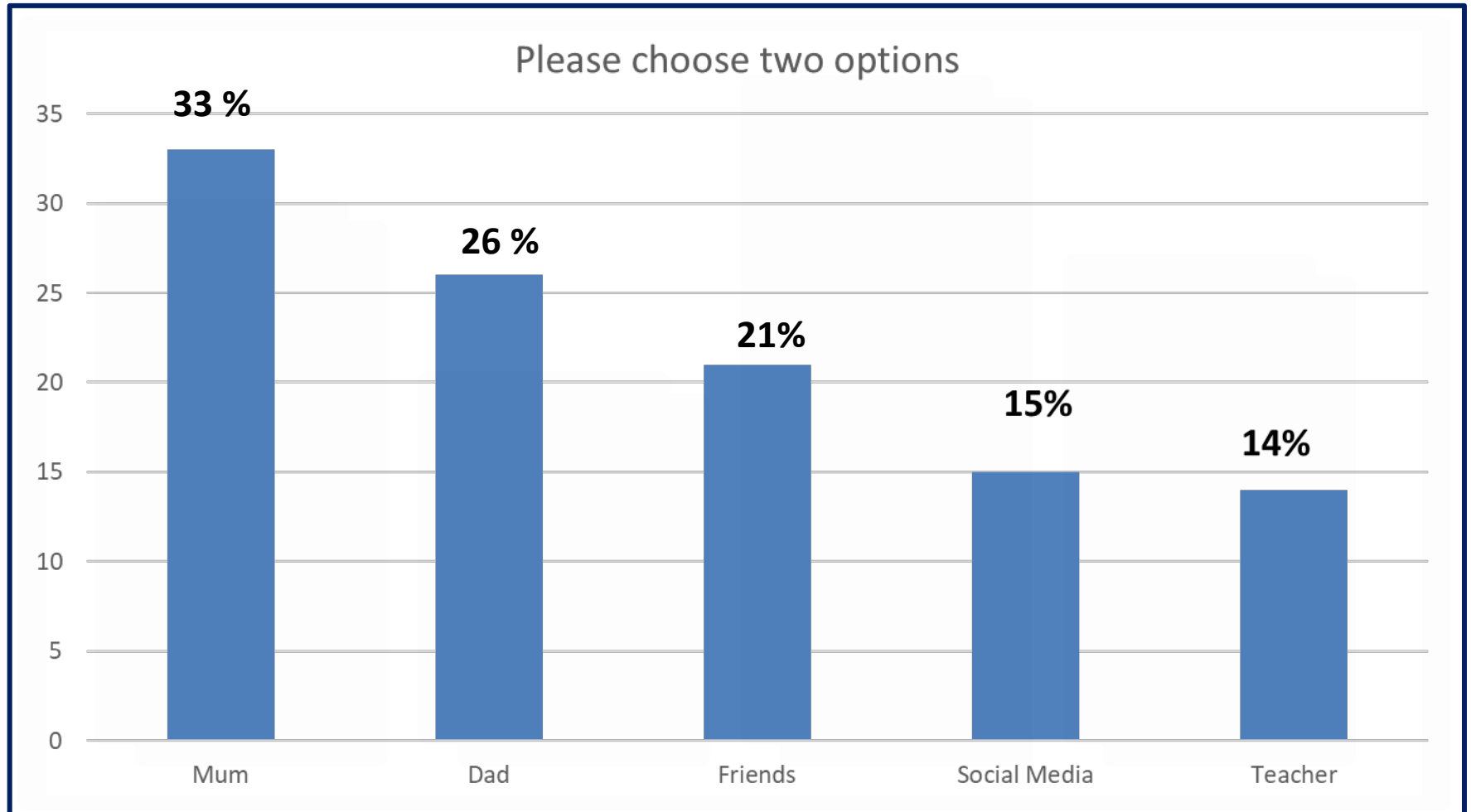
By 2027-28, Sunshine Coast is projected to experience the fastest increase in employment in Queensland. It is projected to comprise 7.1% of the state's workforce.

By 2027-28, it is projected that the Sunshine Coast workforce will be employed within:

| Industry | People employed | % of regional workforce | % change since 2023-24 | Largest occupational groupings |
|---|-----------------|-------------------------|------------------------|---|
|  Health care and social assistance | 45,915 | 21.2 | ↑14.6 | <ul style="list-style-type: none"> Registered Nurses Aged and Disabled Carers Child Carers Nursing Support and Personal Care Workers |
|  Retail trade | 22,576 | 10.4 | ↑6.0 | <ul style="list-style-type: none"> Sales Assistants (General) Retail Managers Checkout Operators and Office Cashiers Shelf Fillers |
|  Accommodation and food services | 22,346 | 10.3 | ↑6.1 | <ul style="list-style-type: none"> Bar Attendants and Baristas Waiters Kitchenhands Chefs |
|  Construction | 21,406 | 9.9 | ↑2.7 | <ul style="list-style-type: none"> Carpenters and Joiners Electricians Construction Managers Plumbers |
|  Education and training | 18,816 | 8.7 | ↑7.9 | <ul style="list-style-type: none"> Primary School Teachers Secondary School Teachers Education Aides Private Tutors and Teachers |
|  Professional, scientific and technical services | 16,184 | 7.5 | ↑8.4 | <ul style="list-style-type: none"> Solicitors Accountants Software and Applications Programmers Civil Engineering Professionals |
|  Manufacturing | 9,878 | 4.6 | 0.0 | <ul style="list-style-type: none"> Cabinetmakers Structural Steel and Welding Trades Workers Production Managers Metal Fitters and Machinists |
|  Other services | 9,607 | 4.4 | ↑5.0 | <ul style="list-style-type: none"> Hairdressers Motor Mechanics Beauty Therapists Animal Attendants and Trainers |
|  Public administration and safety | 8,585 | 4.0 | ↑9.7 | <ul style="list-style-type: none"> General Clerks Police Contract, Program and Project Administrators Inspectors and Regulatory Officers |

Source: *Jobs Queensland, 2024*

Who most influences your career decisions?



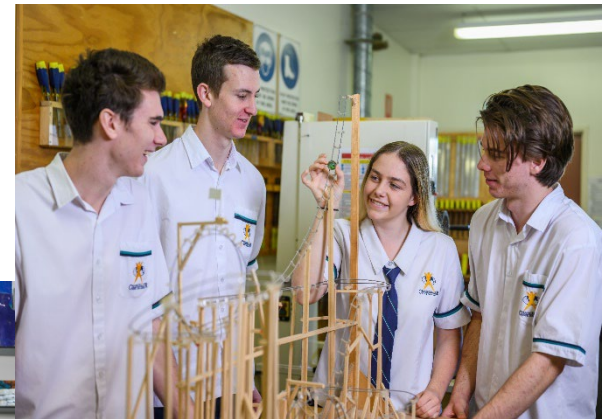
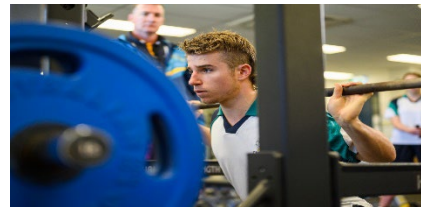
The Senior School



CHANCELLOR
STATE COLLEGE

The best we can be

Providing multiple pathways and diverse learning experiences to engage all senior students in order to maximise learning outcomes and future options.



CARE COURTESY COOPERATION CHALLENGE COMMITMENT

Education Legislation Amendment Act 2006



CHANCELLOR
STATE COLLEGE

The best we can be

Compulsory Participation Phase of Schooling

A young person must:

- Stay in education or training for 2 more years **or**
- Get a QCE **or**
- Get a Certificate III vocational qualification or higher **or**
- Turn 17, which ever comes first
- There is an exception for young people working 25 hours or more per week



CHANCELLOR
STATE COLLEGE

The best we can be

Our Goal for You

1. **All students obtain a** Queensland Certificate of Education (QCE) or Queensland Certificate of Individual Achievement (QCIA).

2. **Students either obtain:**
 - An ATAR that will allow for options heading into further study, and/or;
 - A VET qualification of Cert III or above

3 Questions and a Wish for You



CHANCELLOR
STATE COLLEGE

The best we can be

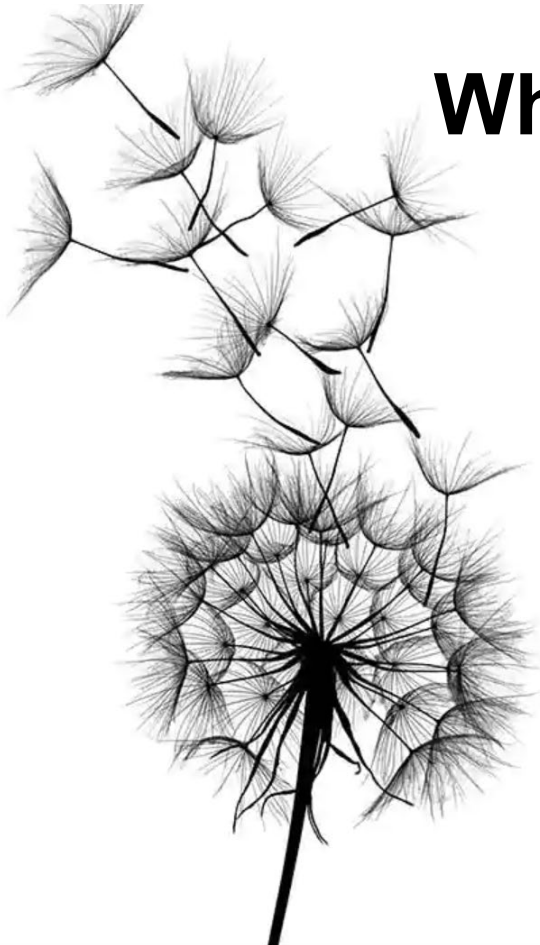
What do they like?

What are they good at?

**What is going to give them
options?**

Our wish is that our students
will...

make a difference.



What do You like?



CHANCELLOR
STATE COLLEGE

The best we can be

Australian Government **JOB OUTLOOK** Career Tools Careers Industries A-Z My Careers List Search

[Home](#) > [Career Tools](#) > Career Quiz PRINT

Step 1 of 5

Choose one task you would most enjoy from each group

Group 1

| | | | | | |
|-------------------------------------|--|--------------------------------------|-------------------------|--|----------------------------------|
| Train in surf lifesaving at a beach | Work on genetic research in a laboratory | Write articles for a popular website | Manage a company budget | Convince local shops to sell your products | Care for sick people in hospital |
|-------------------------------------|--|--------------------------------------|-------------------------|--|----------------------------------|

Group 2

| | | | | | |
|----------------------------|---|------------------------------------|------------------------|----------------------------|-------------------------------|
| Help people with enquiries | Look after children at a childcare centre | Pick and sort grapes in a vineyard | Study weather patterns | Design and plan workspaces | Manage paperwork in an office |
|----------------------------|---|------------------------------------|------------------------|----------------------------|-------------------------------|

Group 3

| | | | | | |
|--------------------------------------|---------------------|------------------------|--|---------------------------------------|----------------------------------|
| Create and test new types of plastic | Act in a stage play | Calculate house prices | Coordinate fundraising for a local group | Provide support to stressed employees | Patrol local waterways in a boat |
|--------------------------------------|---------------------|------------------------|--|---------------------------------------|----------------------------------|

CARE COURTESY COOPERATION CHALLENGE COMMITMENT

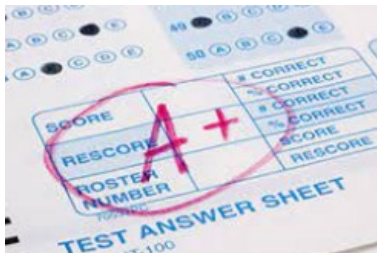
What are You good at?



**CHANCELLOR
STATE COLLEGE**

The best we can be

| Subject | Semester 1 2020 | Semester 2 2020 | Interim Report Apr 2021 |
|---|-----------------|-----------------|-------------------------|
| English | B | A | B |
| English | A | A | B |
| Mathematics | B | B | C |
| Mathematics Extension | A | B | B |
| Science | A | B | B |
| Science | A | B | B |
| Science - Marine Adventures | A | B | B |
| Humanities and Social Sciences | A | B | B |
| Humanities and Social Sciences | A | B | B |
| Certificate II in Skills for Work and Vocational Pathways | A | B | B |
| Health and Wellbeing | A | B | B |
| Film and Television | A | B | B |
| Business Studies | A | B | B |
| Design Technology | A | B | B |
| My Journey | A | B | B |



CARE COURTESY COOPERATION CHALLENGE COMMITMENT

What's going to give You options?



CHANCELLOR
STATE COLLEGE

The best we can be

QTAC

CHOOSE
THE FUTURE

20
MAY

Offer Round – Thursday 20 May
Due date to apply and submit documents – Thursday 13 May 2021

3
JUN

Offer Round – Thursday 3 June
Due date to apply and submit documents – Thursday 27 May 2021
Final date to change preferences – 11:59pm 2021

17
JUN

Offer Round – Thursday 17 June 2021
Due date to apply and submit documents – Thursday 10 June 2021

22
JUN

Offer Round – Tuesday 22 June 2021
Due date to apply and submit documents – Tuesday 15 June 2021

24
JUN

Offer Round – Thursday 24 June 2021
Due date to apply and submit documents – Thursday 17 June 2021



Don't choose just any path – choose your future. Find a degree to match your interests, passions and career goals.



CARE COURTESY COOPERATION CHALLENGE COMMITMENT



**CHANCELLOR
STATE COLLEGE**

The best we can be

Queensland Certificate of Education (QCE)

For students completing Year 12 from 2020

About the QCE

- The QCE is Queensland's senior secondary schooling qualification.
- Students can choose from a wide range of learning options to suit their interests and career goals.
- To receive a QCE, students must achieve the set amount of learning, at the set standard, in a set pattern, while meeting literacy and numeracy requirements.





QCE requirements

As well as meeting the below requirements, students must have an open learning account before starting the QCE, and accrue a minimum of one credit from a Core course of study while enrolled at a Queensland school.

Set amount

20 credits from contributing courses of study, including:

- QCAA-developed subjects or courses
- vocational education and training (VET) qualifications
- non-Queensland studies
- recognised studies.

Set pattern

12 credits from completed Core courses of study and 8 credits from any combination of:

- Core
- Preparatory (maximum 4)
- Complementary (maximum 8).

Set standard

Satisfactory completion, grade of C or better, competency or qualification completion, pass or equivalent.

Literacy & numeracy

Students must meet literacy and numeracy requirements through one of the available learning options.



**Set
pattern**

To meet the set pattern requirement for a QCE, at least 12 credits must be accrued from completed Core courses of study. The remaining 8 credits may accrue from a combination of Core, Preparatory or Complementary courses of study.

- **Core:** At least 12 credits must come from completed Core courses of study.

| COURSE | SET STANDARD | QCE CREDITS PER COURSE |
|--|---|---------------------------|
| General or Applied Subjects | At least a C Level of Achievement | up to 4 |
| VET Certificate II qualifications | Certificate awarded | up to 4 |
| VET Certificate III and IV qualifications (includes traineeships) | Certificate awarded | up to 8 |
| School-based apprenticeships | Certificate III competencies demonstrated On-the-job component completed | up to 6 |

- **Preparatory:** A maximum of 4 credits can come from Preparatory courses of study.

| | | |
|---------------------------------------|---------------------|---------|
| VET Certificate I qualifications | Certificate awarded | up to 3 |
| Maximum of 2 qualifications can count | | |
| QCAA Short Course in Literacy | | up to 1 |
| QCAA Short Course in Numeracy | | |

- **Complementary:** A maximum of 8 credits can come from Complementary courses of study.

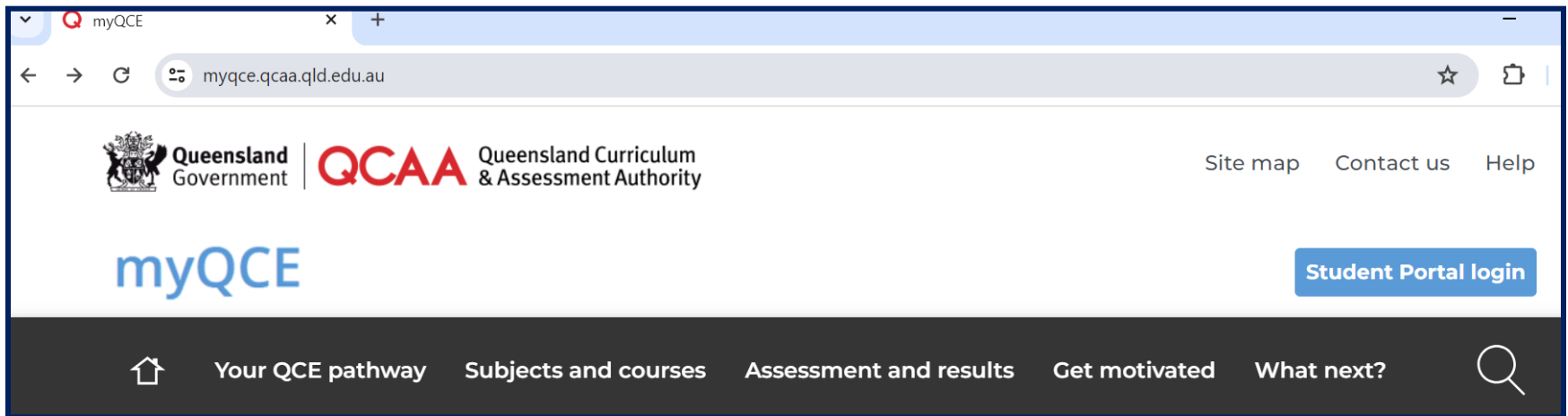
| | |
|------------------------|---------|
| Diploma qualifications | up to 8 |
| University subjects | up to 4 |

https://www.qcaa.qld.edu.au/downloads/senior/snr_schooling_qld_guide.pdf



CHANCELLOR
STATE COLLEGE

The best we can be



myqce.qcaa.qld.edu.au

What is ATAR?



CHANCELLOR
STATE COLLEGE

The best we can be

Primary mechanism used nationally for tertiary admissions; Indicates a student's position relative to other students

2,000 point scale from 99.95 down to 0.00

Calculated by QTAC for entry into courses

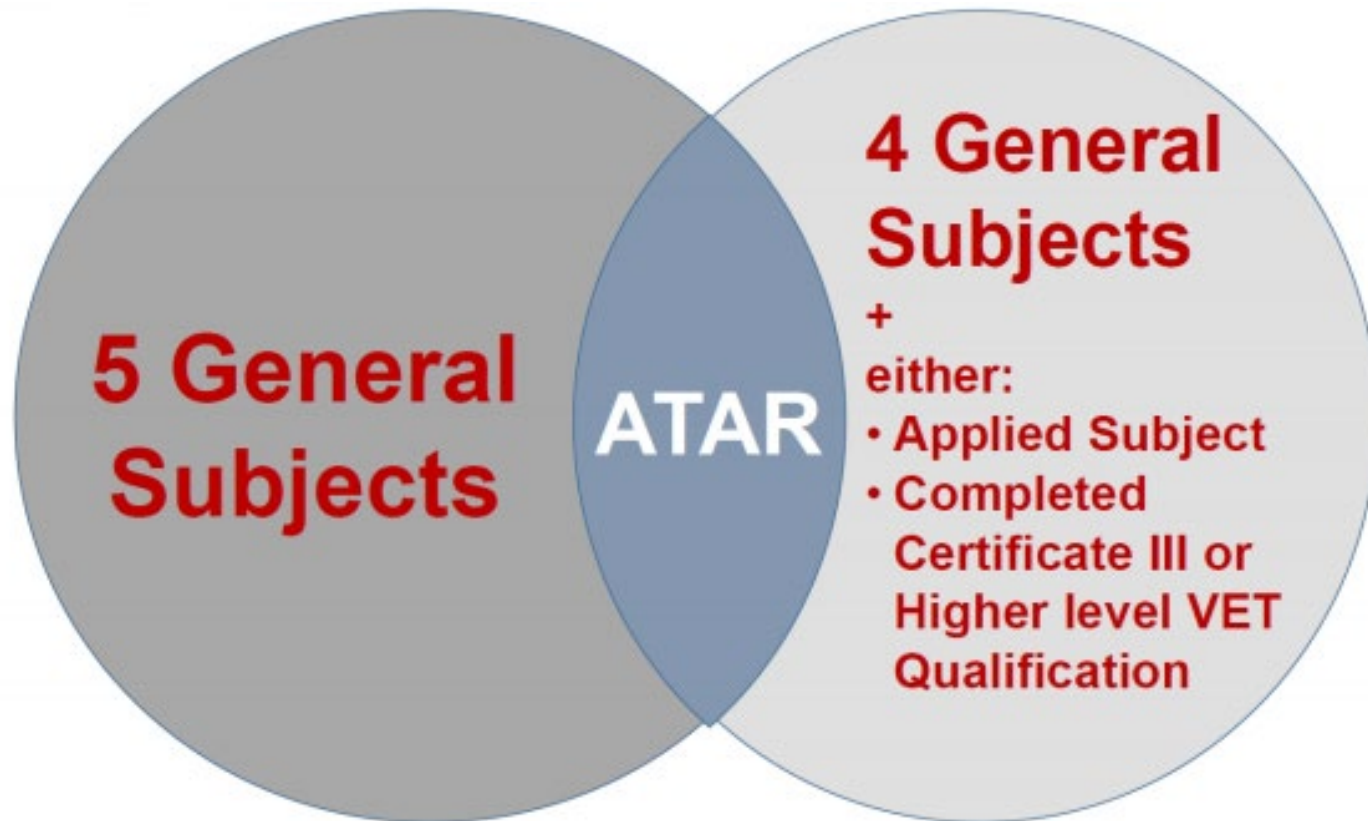
Other options: Ranking through Certificate III or IV;
2 x Headstart; Diploma

ATAR Eligibility



CHANCELLOR
STATE COLLEGE

The best we can be



External Learning Options



**CHANCELLOR
STATE COLLEGE**

The best we can be



START QUT

Test drive university subjects while you're in Year 11 and 12

Why study START QUT?

START QUT is ideal if you are a high-achieving student and want to extend your senior studies.

With the START QUT program you can:

- try up to two different study areas to help you to decide on your future course and career options
- earn credit towards your senior standing (credit) for up to two units towards a future senior diploma, reducing future study costs
- be eligible for up to four credit points towards your Queensland Certificate of Education (QCE)
- receive an attachment of up to 200 QUT credit points, one for each unit you successfully complete, towards entry to most QUT courses through the Year 12 School Scheme
- prepare for uni by attending classes and undertaking assessment designed for senior QUT students
- extend your knowledge in areas of interest and start working towards your career goal
- learn from world-class teachers who will support and inspire you
- immerse yourself in the university lifestyle and become part of the student community

What can I study?

You can complete one or two units from a wide range of study areas including:

- architecture and built environment
- business
- communication
- creative arts
- design
- engineering
- health
- information technology and games
- justice
- law
- mathematics and data science
- science
- teaching and education

Depending on which unit you choose, you could study at Gardens Point campus, Kelvin Grove campus or online.

How will START QUT fit in with my school studies?

Each START QUT unit has been designed with classes running both during and outside school hours. You'll need to talk with your school and parents/guardians to work out what best manages your university studies, school and other commitments.

Interested in STEM?

START QUT STEM focused is a two-week intensive study program where you complete a STEM unit in the January summer holidays before commencing Year 12. You'll gain insight into STEM studies in a safe and supportive environment.

Applications must be submitted by 21 October when in Year 11.

Find out more at qut.edu.au/startqut

START QUT gives me the amazing opportunity to experience what it's like to be a university student while still in high school.

I've gained the freedom to go to lectures and attend my classes on campus, which was a change from the whole school day. The START QUT program also allowed me to take all my high school studies and complete science over the path for me.

LUCAS FERREIRA
Information technology student

HEADSTART

GET AHEAD WITH YOUR UNIVERSITY STUDIES

SEMESTER 2, 2022 | SEMESTER 1, 2023

CARE COURTESY COOPERATION CHALLENGE COMMITMENT

Headstart



Vocational Pathways



CHANCELLOR
STATE COLLEGE

The best we can be

Option 1

Work Experience

Option 2

Trade Taster Courses

Option 3

TAFE at Schools Program

Option 4

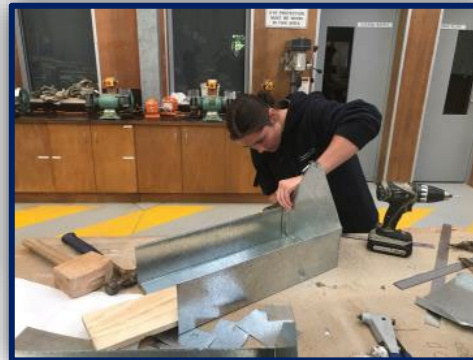
School-based Apprenticeships and Traineeships

Option 5

Certificate courses completed at Chancellor SC

Option 6

Certificate courses completed outside of Chancellor SC



CARE COURTESY COOPERATION CHALLENGE COMMITMENT

Help

Vocational Pathways

Your go-to people



CHANCELLOR
STATE COLLEGE

The best we can be

Industry Liaison Officer
(ILO)

Jacinta Hesse

D Block Staffroom



HOD VET

**Mrs
Goldsworthy**

B Block Staffroom



VET Teachers

Staffrooms



CARE COURTESY COOPERATION CHALLENGE COMMITMENT

Option 1

Vocational Pathways Work Experience



CHANCELLOR
STATE COLLEGE

The best we can be

- Must be at least 14 years old.
- Can be arranged at any suitable time.
- Can do up to 30 days in a year.
- Work Experience Block - 5 days, Term 4, Week 8 (24 to 28 Nov, 2025).
- Helps you decide if a pathway is right for you.
- Will guide your subject selections

***** Must have a signed agreement in place. *****

How?

Take ownership of your future - Find an employer, use personal or family contacts, or ask Jacinta.

See Jacinta with your employer details

Complete an agreement BEFORE your placement.

Option 2

Vocational Pathways Trade Taster Course



CHANCELLOR
STATE COLLEGE

The best we can be

- Year 10, Terms 2 and 3.
- One day per week for nine weeks.
- Completed at Nambour and Mooloolaba TAFE campuses.
- Helps you to decide if a longer term 'TAFE at School' course is right for you.
- It's FREE
- Limited numbers – get in quick!
- Current Trade Taster courses: General (Construction), Cookery, Salon and Community.

How?

Frequently check your emails

See Jacinta for details

Applications online, must be done through Jacinta.

Option 3

Vocational Pathways

TAFE at School



CHANCELLOR
STATE COLLEGE

The best we can be

- TAFE AT SCHOOL Course Guide
- Enrolments open in July for the following year.
- VETiS funded – ONE ONLY, mostly Cert II

Rural Operations, Animal Care, Automotive Vocational Preparation, Autonomous Technologies, Aircraft Line Maintenance, Salon Assistant, Retail Cosmetics, Plumbing Services, Community Services, Electrotechnology, Engineering pathways, Apparel, Fashion and Textiles, Hospitality, Cookery, Autonomous Technologies, Health Support Services, Sport Coaching

How?

Frequently check your emails
Check out the TAFE AT SCHOOL Course Guide

See Jacinta for details

Applications online, must be done through Jacinta.

Option 4

Vocational Pathways

School-based Apprenticeships and Traineeships



CHANCELLOR
STATE COLLEGE

The best we can be

- Earn a wage
- Earn QCE points
- Fully funded while at school
- One day off campus each week

How?

Frequently check your emails

Check in with Jacinta

Resume and cover letter

Make yourself known - approach suitable businesses

Work experience if required

Back to Jacinta for sign-up

Option 5



CHANCELLOR
STATE COLLEGE

The best we can be

Vocational Pathways

Certificate courses completed at Chancellor SC

Fees apply

Certificate II in Engineering Pathways
Certificate II in Manufacturing Technology
Certificate II in Tourism followed by Certificate III in Events
Certificate III in Business
Certificate III in Sport, Aquatics and Recreation
Certificate III in Early Childhood Education and Care
Certificate III in Fitness
Diploma of Business

How?

Chose them at subject selection time.

Check pre-requisites

Option 6



CHANCELLOR
STATE COLLEGE

The best we can be

Vocational Pathways

Certificate courses completed outside of Chancellor SC

Fees apply

Certificate II in Tourism
Certificate II Health Support Services
Certificate II in Rural Operations – Equine
Certificate III in Aviation (Remote Pilot)
Certificate II in Aircraft Line Maintenance
Certificate II Health Support Services
Certificate II in Cookery
Certificate IV Crime and Justice

How?

Frequently check your emails

See Jacinta

Applications must be done through Jacinta.

Set Plan Process



**CHANCELLOR
STATE COLLEGE**

The best we can be

**Students participate in Career
Exploration Activities**

**Students receive information about QCE, School
Pathways, and Senior Subjects**

Students complete Subject Survey

SET Plan Interviews available for Booking

**Students complete SET Plan in
OneSchool**

**Students complete a SET Plan Interview with parent
and finalise Subject Selections for 2026**

Online Subject Survey



**CHANCELLOR
STATE COLLEGE**

The best we can be

Chancellor State College

Subject Selection Structure - Yr 11 Subject Survey

Number of Subjects to Select: **6**

Additional Preferences: **2**

Mandatory KLA: **English, Mathematics**

Student Instructions:

This is a survey for Yr 10 2021 students about Yr 11 2022 subjects that you may be interested in completing or finding out more information about. Please note, not all of these subjects will be offered or may run for Yr 11 - 2022, however the subject offerings for 2022 will be informed by the results of this survey.

Please choose 6 subjects that you are most interested in and 2 subjects that could be considered "back - up" subjects.

| | | | |
|--------------------------------|---|--|--|
| ENGLISH | <input type="checkbox"/> English | <input type="checkbox"/> English - Literacy Short Course | <input type="checkbox"/> Essential English |
| | <input type="checkbox"/> Literature | <input type="checkbox"/> | <input type="checkbox"/> |
| MATHEMATICS | <input type="checkbox"/> Essential Mathematics | <input type="checkbox"/> General Mathematics | <input type="checkbox"/> Mathematical Methods |
| | <input type="checkbox"/> Specialist Mathematics | <input type="checkbox"/> | <input type="checkbox"/> |
| SCIENCE | <input type="checkbox"/> Aquatic Practices | <input type="checkbox"/> Biology | <input type="checkbox"/> Chemistry |
| | <input type="checkbox"/> Marine Science | <input type="checkbox"/> Physics | <input type="checkbox"/> Psychology |
| | <input type="checkbox"/> Science in Practice | <input type="checkbox"/> | <input type="checkbox"/> |
| HUMANITIES AND SOCIAL SCIENCES | <input type="checkbox"/> Aboriginal and Torres Strait Islander Studies | <input type="checkbox"/> Ancient History | <input type="checkbox"/> Business |
| | <input type="checkbox"/> Economics | <input type="checkbox"/> Geography | <input type="checkbox"/> Legal Studies |
| | <input type="checkbox"/> Modern History | <input type="checkbox"/> Social and Community Studies | <input type="checkbox"/> |
| HPE | <input type="checkbox"/> Health | <input type="checkbox"/> Physical Education | <input type="checkbox"/> Sport and Recreation |
| THE ARTS | <input type="checkbox"/> Dance | <input type="checkbox"/> Drama | <input type="checkbox"/> Film, Television and New Media |
| | <input type="checkbox"/> Music | <input type="checkbox"/> Visual Art | <input type="checkbox"/> Visual Arts in Practice |
| TECHNOLOGIES | <input type="checkbox"/> Design | <input type="checkbox"/> Engineering | <input type="checkbox"/> Fashion |
| | <input type="checkbox"/> Hospitality Practices | <input type="checkbox"/> Industrial Graphics Skills | <input type="checkbox"/> |
| LANGUAGES | <input type="checkbox"/> Japanese | | |
| Other - KLA | <input type="checkbox"/> Certificate II in Engineering Pathways | <input type="checkbox"/> Certificate II in Manufacturing Technology | <input type="checkbox"/> Certificate II in Skills for Work and Vocational Pathways |
| | <input type="checkbox"/> Certificate III in Business | <input type="checkbox"/> Certificate III in Early Childhood Education and Care | <input type="checkbox"/> Certificate III in Fitness |
| | <input type="checkbox"/> Certificate III in Information, Digital Media and Technology | <input type="checkbox"/> Certificate III in Sport & Recreation | <input type="checkbox"/> Certificate III in Tourism |
| | <input type="checkbox"/> Diploma of Business | <input type="checkbox"/> | <input type="checkbox"/> |
| | | | |

How do you choose what to study?



CHANCELLOR
STATE COLLEGE

The best we can be

- Using the **Senior Education and Training (SET) plan**, a member of the SET Plan Team, parents/carers and the student will sit down together to discuss options. Together you will decide on the best learning options for the student in the senior phase of learning.
- The SET plan ensures that the study options complement the student's post-school preferred outcomes, e.g. employment, training or further study.
- **Essential documents: Pathway Selection Form/SET plan (including online subject selection)**

SET Plan Dates



CHANCELLOR
STATE COLLEGE

The best we can be

The Year 10 SET plan process is completed through an interview with the student and a parent or guardian and a school representative.

The aim of this interview is to discuss the pathway identified by the student and suitability of their subject selections to successfully achieve the pathway.

Interview bookings will open in **Week 1, Term 3** and will occur in Week 4, Term 3:

- **Tuesday 5 August** – 3:00pm to 6:00pm
- **Wednesday 6 August** - 7:30am to 6:00pm
- **Thursday 7 August** - 7:30am to 6:00pm
- **Friday 8 August** - 7:30am to 2:30pm

