

## Portfolio Entry

Students who are looking to Acceler8 need to register an expression of interest with the college. Your Portfolio needs to be received no later than Monday 14 September 2009.

Acceler8 Program admission depends on:

- ✘ the quality of your portfolio
- ✘ your results in a student admission test
- ✘ parent endorsement of your portfolio and the Acceler8 program

The admission process will be finalised in Term 4.

Students outside the enrolment boundary are welcome to apply for entry into the Acceler8 Program.

To register an expression of interest, please forward your portfolio to the college being sure to include the following details:

- ✘ Student name
- ✘ Parent's name
- ✘ Postal address
- ✘ Contact phone number

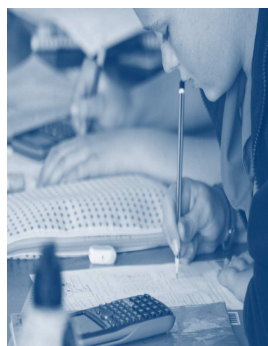
the best we can be . . .



## Your College Your Community

Chancellor State College is situated in the Sippy Downs Educational Precinct, partnering with the University of the Sunshine Coast to deliver world class academic pathways enriched by the shared facilities and resources of the College and the University.

This partnership enables you as a student of the Chancellor College Community to journey through your secondary school success into tertiary triumphs. Are you ready for the challenge?



Chancellor  
State College

# ACCELER8



the best we can be . . .

[www.chancellorsc.eq.edu.au](http://www.chancellorsc.eq.edu.au)

## Why Acceler8?

This program offers a select group of students the opportunity to work in an accelerated learning program in order to extend their engagement with curriculum and develop high level academic skills throughout the senior phase of learning. The aim of the program is to encourage highly motivated students to achieve greater success through selective grouping and a diverse and challenging range of teaching and learning strategies.

Focusing on the core areas of English and Mathematics, the Acceler8 program allows students to fast-track their completion of senior syllabus requirements. This enables greater timetable flexibility across the three years of senior studies. As a result, students may choose to undertake options of academic enrichment programs. This may take the form of tertiary studies, alternate academic studies or Acceler8 course specific studies.

Acceler8 students will be provided with the skills and knowledge needed to reach their full academic potential. Moreover, they will develop greater independence as learners and be encouraged to seek out individualised opportunities to create real pathways into academic and/or industry based programs.

## Who Should Acceler8?

Highly motivated, academically successful Year 9 students are encouraged to submit a portfolio for consideration to enter the Acceler8 program.

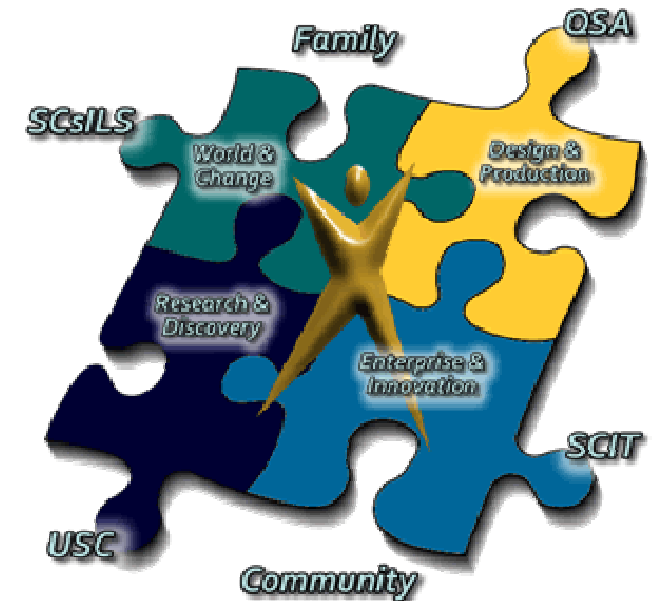
Parents of students wishing to submit an expression of interest must fully endorse the Acceler8 Program.

## My Acceler8 Portfolio?

Your portfolio should reflect your motivation for academic success. It should include but is not limited to:

- ✂ 2009 Learning Signpost Reflections
- ✂ Recent reports highlighting Academic Achievement and Exemplary Conduct
- ✂ Certificates and Awards for Academic Achievement
- ✂ Career / University Aspirations
- ✂ Parent Endorsement
- ✂ Other information you deem relevant

Students may elect to use the College Portfolio Template to organise your application.



## Acceler8 is about ...

- ✂ Academically talented students working together
- ✂ A clear focus on a deep understanding of the core learning of English and Mathematics.
- ✂ Enrichment and challenge in designing senior phase of learning pathways:
  - ✂ University Options
  - ✂ Depth of study in academic programs
  - ✂ English and Mathematics eruditeness